

**CROSSROADS TOWN CENTER
WIMBERLEY, TEXAS**

PARSHALL & ASSOCIATES ARCHITECTS

916 West 3rd Street, Suite A - Austin, Texas 78703
phone: 512.477.1696 fax: 512.477.1693 email: parshall@sbcglobal.net

PRELIMINARY
NOT FOR CONSTRUCTION
OR REGULATORY APPROVAL OR PERMITS

RUTH PARSHALL TRAEF
JOHN PATTERSON TRAEF

COPYRIGHT © 2006

REVISION	DATE	DESCRIPTION

SHEET TITLE: CONCEPTUAL FLOOR PLAN	
ISSUE: CONCEPTUAL	DRAWN BY: RG
PROJECT#: 2006.000	CHECKED BY: RP/JCP
DATE: 08/11/06	DWG. FILE: A3.00.dwg

A3.00

CONCEPTUAL BUILDING "C" FLOOR PLAN
SCALE: 3/16" = 1'-0"

BLDG D
REFER TO SHEET A4.00

BLDG C

CANOPY
REFER TO SHEET A3.00a

PASS-THRU WINDOW WITH DROP BOX

PASS-THRU WINDOW WITH DROP BOX

LANDSCAPE AREA

LANDSCAPE AREA

ACCESSIBLE ROUTE

CONCRETE SIDEWALK

CONCRETE SIDEWALK

CONCRETE SIDEWALK

CONCRETE SIDEWALK

PAVED PARKING

PAVED PARKING

PAVED PARKING

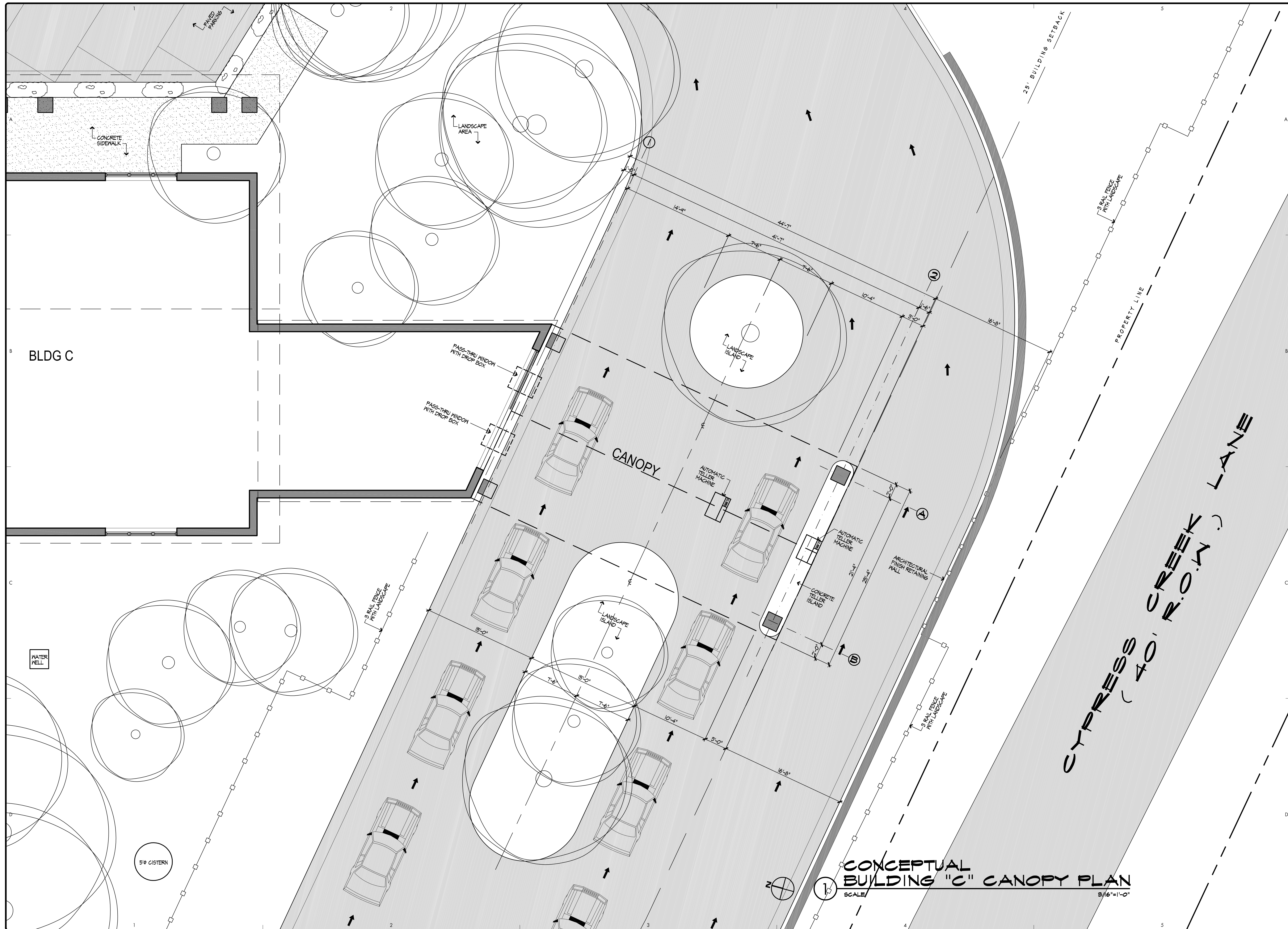
WATER WELL

3' BAL FENCE WITH LANDSCAPE

LANDSCAPE ISLAND

AUTOMATIC TELLER MACHINE

40' BUILDING SETBACK



**CROSSROADS TOWN CENTER
WIMBERLEY, TEXAS**

PARSHALL & ASSOCIATES ARCHITECTS
916 West 3rd Street, Suite A - Austin, Texas 78703
phone: 512.477.1696 fax: 512.477.1693 email: parshall@sbcglobal.net

PRELIMINARY
NOT FOR CONSTRUCTION
OR REGULATORY APPROVAL OR PERMITS

RUTH PARSHALL TRAE
JOHN PATTERSON TRAE

COPYRIGHT © 2006

REVISION	DATE	DESCRIPTION

SHEET TITLE:		CONCEPTUAL FLOOR PLAN	
ISSUE:	PROJECT#:	DRAWN BY:	RG
CONCEPTUAL	2006.000	CHECKED BY:	RP/JCP
DATE:	DWG. FILE:		
08/11/06	A3.00a.dwg		

A3.00a

CONCEPTUAL BUILDING "C" CANOPY PLAN
SCALE: 3/16"=1'-0"

CYPRESS CREEK R.O.W. LANE