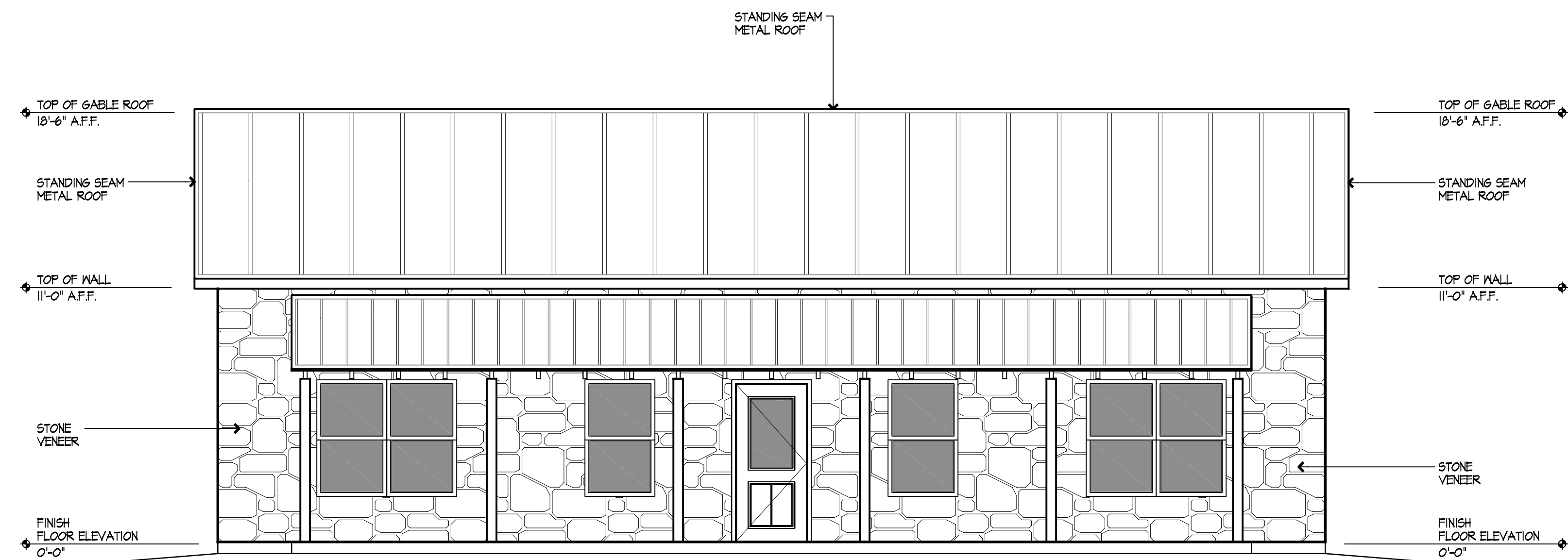
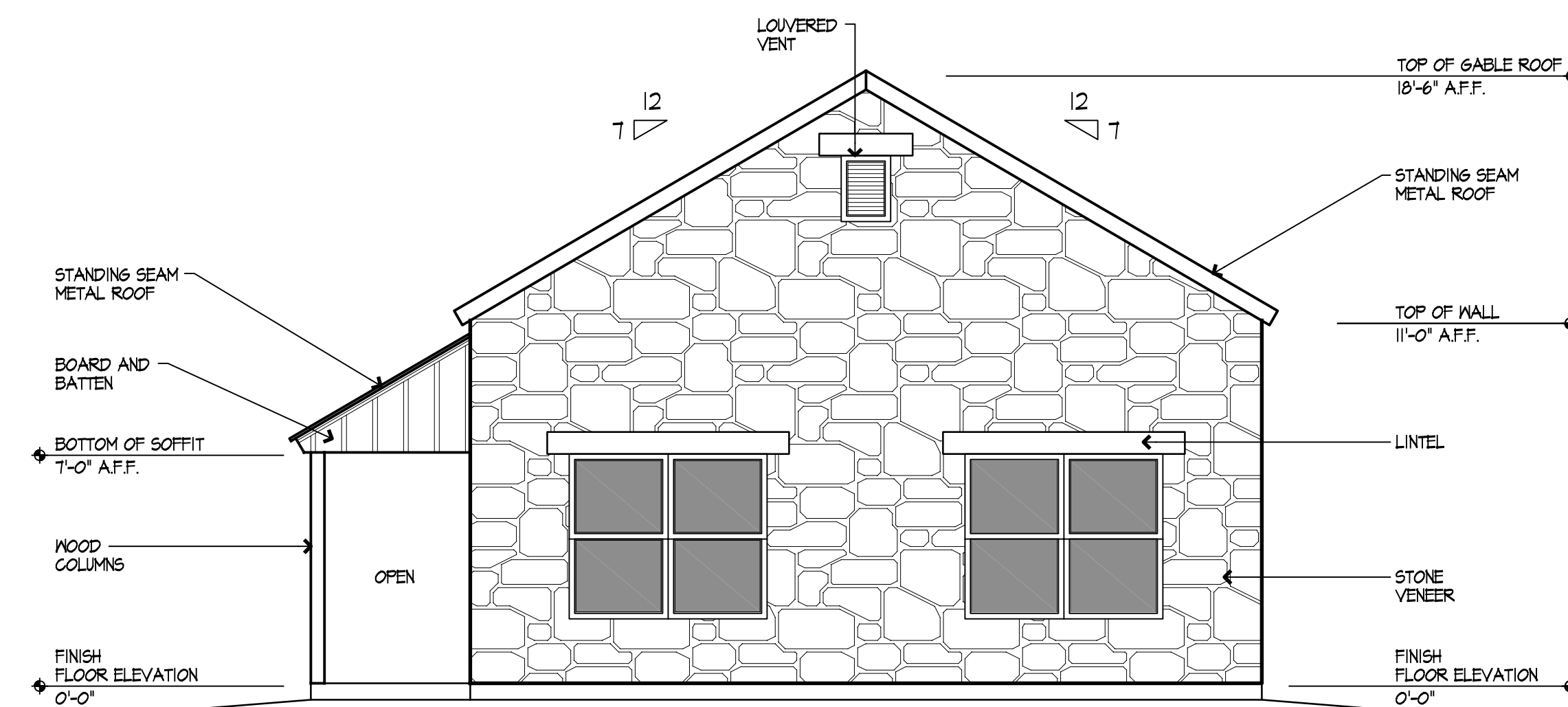


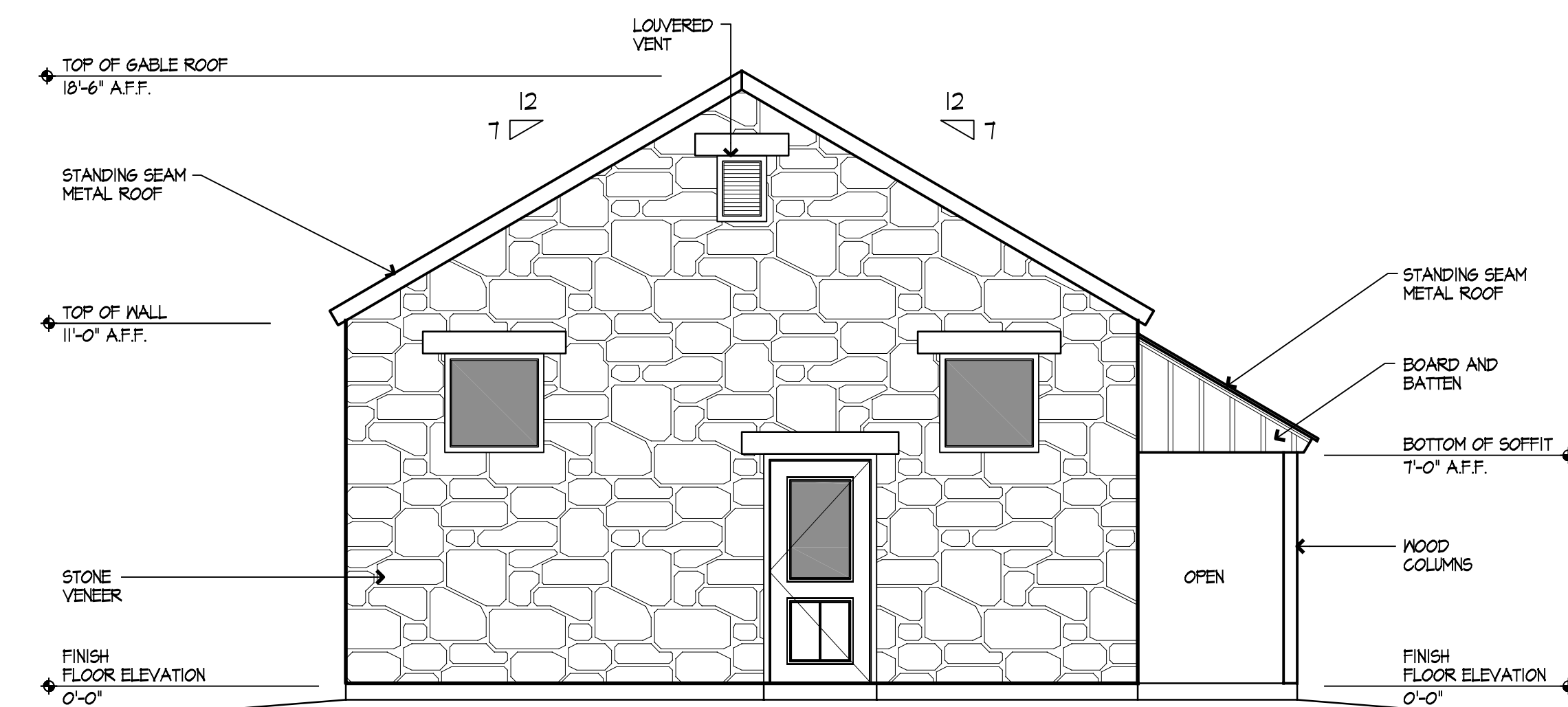
**1 WEST ELEVATION**  
SCALE: 1/4"=1'-0"



**2 EAST ELEVATION**  
SCALE: 1/4"=1'-0"



**4 SOUTH ELEVATION**  
SCALE: 1/4"=1'-0"



**3 SOUTH ELEVATION**  
SCALE: 1/4"=1'-0"

**CROSSROADS TOWN CENTER  
WIMBERLEY, TEXAS**

**PARSHALL & ASSOCIATES ARCHITECTS**  
916 West 3rd Street, Suite A - Austin, Texas 78703  
phone: 512.477.1696 fax: 512.477.1693 email: parshall@sbcglobal.net

PRELIMINARY  
NOT FOR CONSTRUCTION  
OR REGULATORY APPROVAL OR PERMITS  
RUTH PARSHALL TRAEF  
JOHN PATTERSON TRAEF  
COPYRIGHT © 2006

REVISION	DATE	DESCRIPTION

SHEET TITLE:	<b>CONCEPTUAL BUILDING "H" ELEVATIONS</b>
ISSUE:	CONCEPTUAL
DATE:	08/11/06
PROJECT#:	2006.000
DRAWN BY:	RG
DWG. FILE:	A8.01.dwg
CHECKED BY:	RP/JCP

**A8.01**